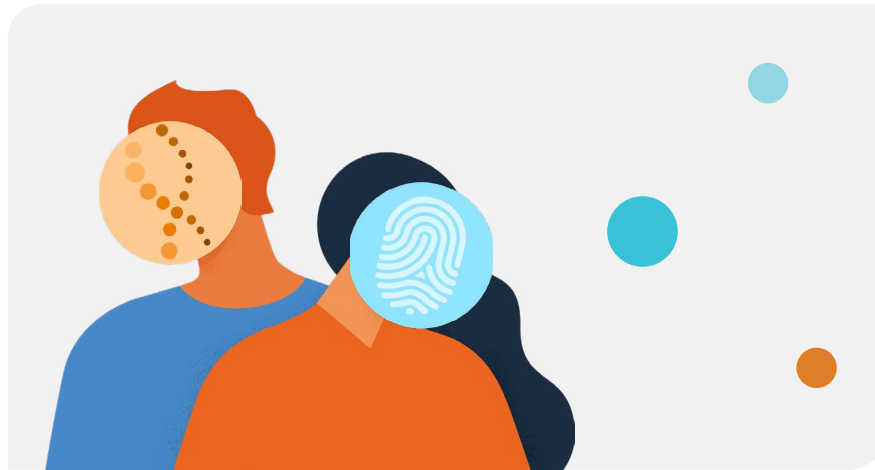




Long-Term Missing Unit

Managing Long-Term Missing Cases



Unit Role and Approach

The Long-Term Case Managers have various backgrounds in law enforcement, medicolegal death investigations and case management experience in missing children's investigations and child homicides. This unit manages cases of long-term missing children and cases of recovered deceased children with a nexus to missing, abducted or exploited incidents. The unit focuses on the development of strategies based upon the unique circumstances of each case. The case managers bring a variety of skills and experiences. The goal is to engage with both internal and external subject matter specialists to support law enforcement efforts towards a resolution.

Case Manager Process

Initially, case managers conduct an in-depth review of each case. A key to accomplishing this goal is the ability to review all case files — to include law enforcement and NCMEC case files.

Areas of focus:

- Determine what evidence may be available or obtainable.
- Review case information from all agencies involved – law enforcement agencies, medical facilities, social services, or governmental agencies.
- Identify persons to be located and contacted – discuss possible interview strategies.
- Examine how the passage of time affects both changes in relationships (suspects, witnesses, family, etc.) and advances in forensic science and technology.
- Establish or renew timelines to identify 'window of opportunity' and persons actions & movements.
- Review all leads.
- Review case circumstances for potential No-Body prosecution.
- Recommend strategies which may benefit the case.

Long-term Resources Available

Case managers seek creative non-traditional approaches available in long-term cases.

- Research to determine persons living in neighborhood at time of incident for renewed canvassing effort.
- Incorporate forensic genealogy where applicable.

Team Adam Consultants

This significant resource provided through the Long-Term Case Managers is use of Team Adam Consultants. These are retired career investigators from local, state and federal law enforcement agencies available to deploy to your law enforcement agency. They bring their experience and can support your case in a variety of ways. For more information of Team Adam and other resources go to link:

[NCMEC.org/caseresources](https://ncmec.org/caseresources) and scroll to **Team Adam**.

Additional Long-Term Resources

- Family support through NCMEC Family Advocacy Division and Team Hope.
- Analytical Services – searching major public databases, NCIC off-line searches, construction of timelines.
- Recommend polygraph services through our USSS liaison.
- Consultation with other law enforcement agencies
 - FBI Behavioral Analysis Unit (BAU)
 - Violent Criminal Apprehension Program (VICAP)
 - FBI Cellular Analysis Survey Team (CAST)
 - US Marshals Service
 - US Secret Service
 - Homeland Security Investigations
 - Military Criminal Investigative Organizations (Army CID NCIS, AF OSI)
 - Prosecutorial resources
- Commercial forensic organizations and biometric resources.
- Media strategy to develop viable and actionable leads.

Enhanced Case Review Resources

Flexible approaches to meet Law Enforcement requests include;

- **Enhanced Case Review:** Convening a panel of subject matter specialists to develop practical strategies in a supportive and non-judgmental environment. NCMEC coordinates in-person and virtual case reviews to include NCMEC staff and appropriate outside specialists.
- **Topic Specific or In-House Consultation:** NCMEC case managers and any other available subject matter specialist can review case files and consult with LE via video conferencing.
 - Considerations:
 - Available witnesses
 - Solvability factors
 - Available evidence
 - Law enforcement choice to focus on specific case aspect or circumstance
 - New technologies and forensic methodologies (genetic DNA, etc.)
 - Conduct post review follow-up with law enforcement
 - After-action report when requested



For more information:

✉ longtermunit@ncmec.org

📺 [Facebook.com/groups/NCMEClongterm](https://www.facebook.com/groups/NCMEClongterm)